



Adore



Textafoam 
creativity in fabrics

| Comfort



Adore

Meet Adore, a real Textaafoam Original. An 'adorable' knitted velvet from our Comfort Collection, suitable for all kinds of upholstery. This collection stands for softness, volume and elegance.

Adore is a piece dyed textile with a printed cloudy- and slub effect. A tone-in-tone backing provides a voluminous handfeel and a luxurious and exclusive look.

Easy to clean, soft, strong and machine- washable at 30 degrees Celsius*.

This luxurious velvet has been a success directly since the launch and through the years it has become one of the best-sellers in the Textaafoam history.

Available in a wide range of contemporary, soft, classic and deep colours.

Packed with care in suspended boxes (full rolls), cutlengths are rolled in bubblewrap. These precautions have been taken to avoid and minimize pressure marks during storage, handling and transport.

Adore is unique

Adore is easy to clean

Adore is washable

Adore is the original

When a pressure mark appears, simply brush against the pile with force/ tension, please give it some time, this way the pile will go back to its original position.

- Please note that no fluor-carbon treatment has been used for this quality, due to the production and dyeing method it is automatically damp & dirt prevented, stain resistant and easy to clean & maintain.

- We recommend to wash the cover inside out and immediately place the cover back to the piece of furniture, slightly damp, after washing.

***Textaafoam originals** Established in 1970, this Dutch family business brings together craftsmen in textiles and furniture design to build an unrivalled portfolio in upholstery fabrics that meets buyer's needs every time. Featuring a wide colour range, ultimate value for money and excellent reliability in the supply chain.*

Composition

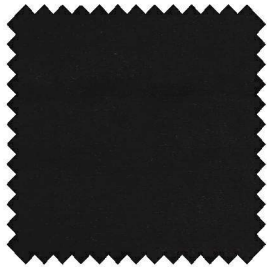
/ faceside 100%PES

/ backside 100%PES

/ knitted velvet

Suitable for

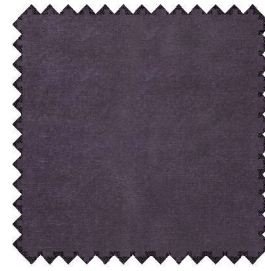
sofa's, beds, chairs with fitted and loose fitting upholstery



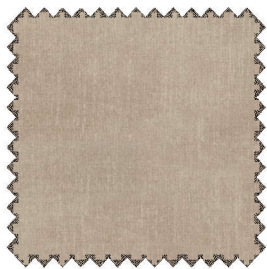
anthracite 67



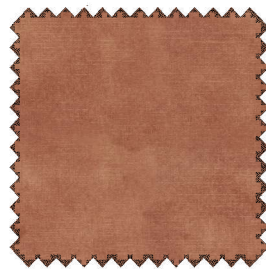
army 14



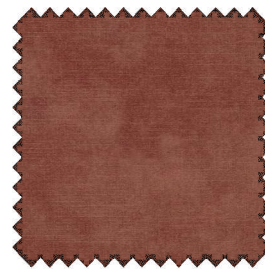
aubergine 74



beige 05



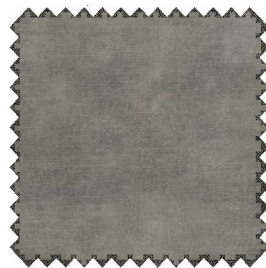
blossom 166



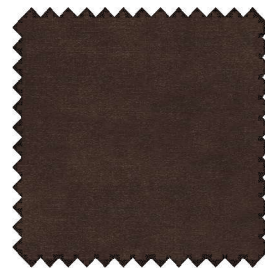
blush 92



brass 170



clay 84



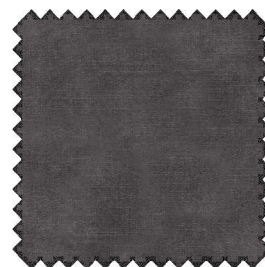
coffee 81



cognac 28

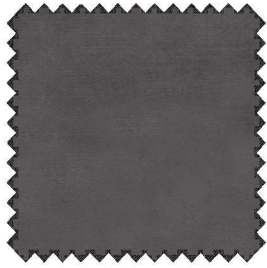


copper 126

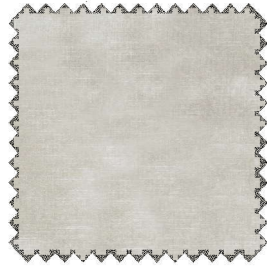


darkgrey 68

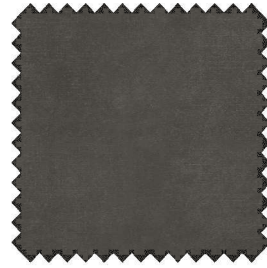
Please note: colours may vary according to your screen settings.



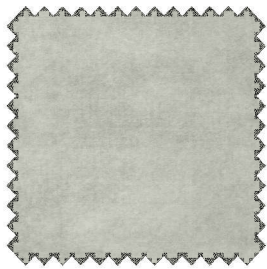
dolphin 180



ecru 102



forest 162



frost 213



gold 132



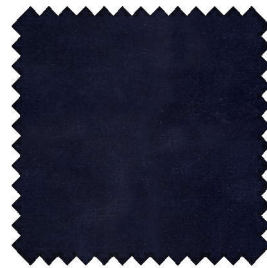
hazel 96



herb 214



hunter 156



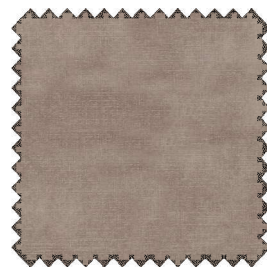
indigo 90



latte 211



linen 110

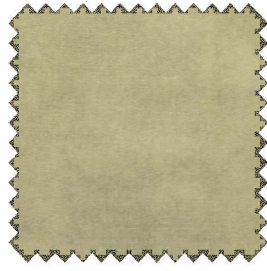


liver 10

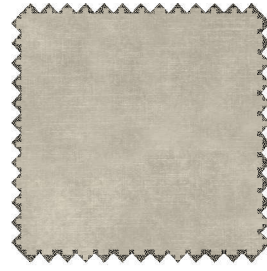
Please note: colours may vary according to your screen settings.



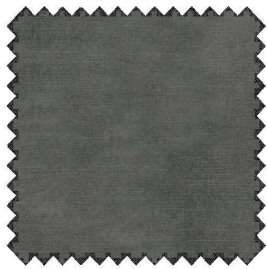
moss 59



mushroom 215



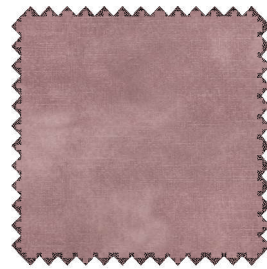
natural 01



niagara 158



oyster 175



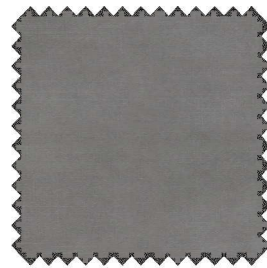
pale 200



petrol 56



sand 03



steel 149



tobacco 111



winered 39



wood 108

Please note: colours may vary according to your screen settings.

Adore - Article passport

Adore is a piece dyed knitted velvet with a printed slub-effect.

Available from stock in a wide range of contemporary and commercial colours.

Product characteristics

Productgroup	knitted velvet
Applications	sofa's, beds, chairs with fitted and loose fitting upholstery
Composition faceside	100%PES
Composition backside	100%PES
Bonding	woven
Statistic code	60053700
Dyeing method	piece dyed
Available colours	36
Packaging	boxes

Durability specifications

Test	Test specification	Executed by laboratory:	Unit	Testresult		Norm RAL GZ 430/4:2019-01		Norm DIN EN 14 465:2006-09
				Dry	Wet	DGM	DGM+	
Abrasion resistance - yarn breakage	DIN EN ISO 12947-1:2007-04, DIN EN ISO 12947-2:2017-03	CTL	cycles	88.000		min. 20.000	min. 40.000	A
Pilling	DIN EN ISO 12945-2:2000-11. 2000 cycles	CTL	grade	5		min. 3-4	min. 4	A
Colour fastness to light	DIN EN ISO 105-BO2:2014-11. Process 3, exposure level 5							
	light colours	CTL	grade	5		min. 4	min.5	B
	middle colours	CTL	grade	5		min. 4	min.5	B
Colour fastness to rubbing	DIN EN ISO 105-X12:2016-11							
	light colours	CTL	grade	5	5	dry: 4, wet: 3	dry: > 4, wet: 3-4	A/A
	middle colours	CTL	grade	5	4-5	dry: 4, wet: 3	dry: > 4, wet: 3-4	A/A
dark colours	CTL	grade	5	4-5	dry: 4, wet: 3	dry: > 4, wet: 3-4	A/A	
	ignitability (cigarette test)	BS 5852 part 1 (1979) from The Furniture and Furnishing (Fire) (Safety) regulations: 1988 No. 1324. Schedule 4 part 1 Ignition source 0: cigarette	CTL	passed				

Processing specifications

Minimum workable width in centimeters	± 138							
Roll length in meters	± 35							
Material weight in grams per linear meter	± 580							
Test	Test specification	Executed by laboratory:	Unit	Testresult		Norm RAL GZ 430/4:2019-01		Norm DIN EN 14 465:2006-09
				Warp	Weft	DGM	DGM+	
Tensile strength	DIN EN ISO 13934-1:2013-08	CTL	Newton	691	583	min. 350	min. 400	A/B
Tear growth resistance	DIN EN ISO 13937-3:2000-06	CTL	Newton	71,7	61,4	min. 25	min. 30	A/A
Resistance to seam slippage	DIN EN ISO 13936-2:2004-07. Load 180 N	CTL	mm	2,5	2,0	max. 5	max. 4	A/A
Delamination	DIN 53530:1981-02	CTL	Newton	20,2	20,5	n/a	n/a	n/a
Chemical substances	REACH	Centexbel		passed				
	Oeko-Tex, product class II	Centexbel		certified				

Cleaning specifications

Test	Test specification	Executed by laboratory:	Unit	Testresult		Norm RAL GZ 430/4:2019-01		Norm DIN EN 14 465:2006-09
				Warp	Weft	DGM	DGM+	
Dimensional change for washing 30 degrees celcius / air drying	DIN EN ISO 5077:2008-04, DIN EN ISO 6330:2013-02, DIN EN ISO 3759:2011-08	CTL	%	-0,4	0,0	n/a	n/a	A/A

- We recommend to wash the cover inside out and immediately place the cover back to the piece of furniture, slightly damp, after washing.



Textaafoam
creativity in fabrics

Textaafoam b.v.
La Défense 11 | 5026 SC Tilburg
P.O. Box 12 | 5050 AA Goirle
The Netherlands

T +31(0)13 534 5934
F +31(0)13 534 7586
E info@textaafoam.nl
www.textaafoam.nl